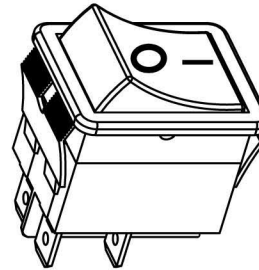
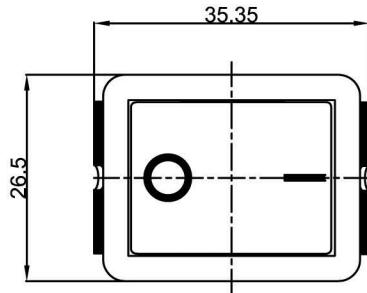
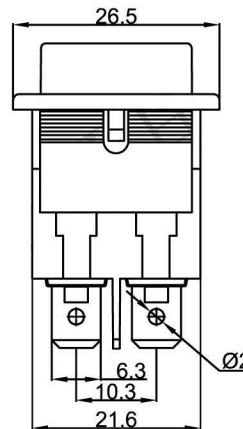
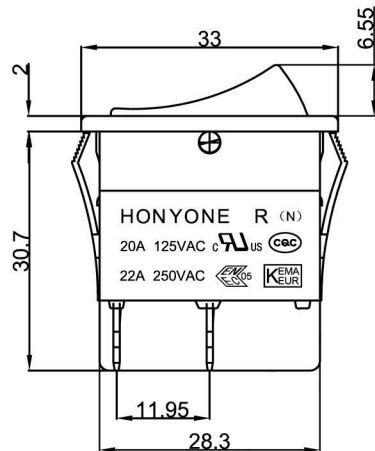


LR

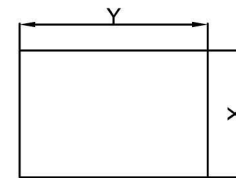
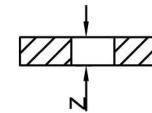


RATING: 20A 125VAC(UL)
22A 250VAC(ENEC/CQC)

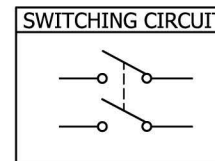
Degree of protection: IP55
Contact Resistance: 20m Ω (Max)
Insulation Resistance: DC 500V 100M Ω (Min)
Dielectric Strength: AC1500V 1 minute
Operating Force: 500±200gf
Mechanical Life: 50,000 cycles
Load Life: 10,000 cycles
Operating Temperature: 0°C~85°C



CUT-OUT



| Z | X | Y |
|-----------|-----------|-----------|
| 0.70~1.25 | 22.0~22.2 | 30.0~30.2 |
| 1.25~2.00 | 22.0~22.2 | 30.2~30.4 |
| 2.00~3.00 | 22.0~22.2 | 30.4~30.6 |



LR-210-C5N-BR-N
01.086.0125

MATERIAL:

Body: Nylon66, UL rated: 94V-2 min
Actuator: Nylon66, UL rated: 94V-2 min
Terminal: Brass, silver or tin plated