

Halogen lamps with reflector MR16

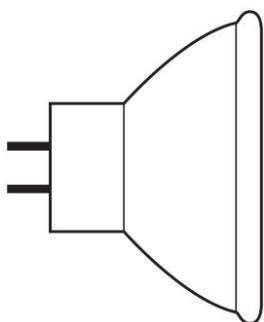


Product family features

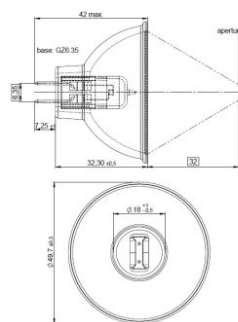
- Xenon instead of krypton as the filler gas (XENOPHOT HLX versions)
- Luminous flux up to 10 % higher with same power consumption (XENOPHOT HLX versions)



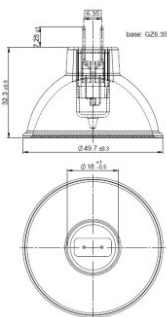
Product family datasheet



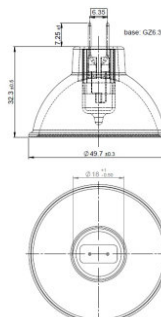
383894_Halogen Lamp with reflector MR16



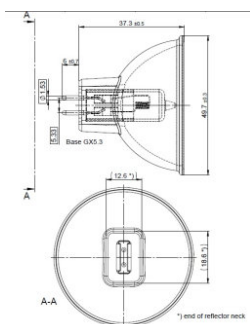
64615 HLX 75W 12V



64627 HLX 100W 12V



64634 HLX 150W 15V



64653 HLX 250W 24V

Product family datasheet

Technical data

| Product description | Product information | Electrical data | | Light technical data | Dimensions & weight | | Lifespan |
|-------------------------|---------------------|-----------------|-----------------|----------------------|---------------------|--------|----------|
| | Order reference | Nominal voltage | Nominal wattage | Focal length | Diameter | Length | Lifespan |
| 64607 50 W 8 V | 64607 EFM 50W 8 | 8 V | 5000 W | 32.0 mm | 510 mm | 420 mm | 50 h |
| 64615 HLX | 64615 HLX | 120 V | 7500 W | 32.0 mm | 510 mm | 420 mm | 50 h |
| 64619 90 W 14.5 V | 64619 90W 14,8V | 145 V | 9000 W | 155.0 mm | 510 mm | 450 mm | 500 h |
| 64627 HLX | 64627 HLX | 120 V | 10000 W | 32.0 mm | 510 mm | 420 mm | 50 h |
| 64629 100 W 12 V | 64629 100W 12V | 120 V | 10000 W | 32.0 mm | 510 mm | 420 mm | 600 h |
| 64637 100 W 12 V | 64637 100W 12V | 120 V | 10000 W | 32.0 mm | 510 mm | 420 mm | 1500 h |
| 64620 150 W 15 V | 64620 150W 15V | 150 V | 15000 W | 32.0 mm | 510 mm | 420 mm | 500 h |
| 64634 HLX | 64634 HLX | 150 V | 150.00 W | 32.0 mm | 510 mm | 420 mm | 50 h |
| 64635 HLX ¹⁾ | 64635 HLX | 150 V | 15000 W | 19.0 mm | 510 mm | 450 mm | 50 h |
| 93637 150 W 21 V | 93637 150W 21V | 210 V | 15000 W | 44.5 mm | 510 mm | 445 mm | 100 h |
| 93638 150 W 21 V | 93638 EKE150W G | 210 V | 15000 W | 44.5 mm | 510 mm | 448 mm | 200 h |
| 64653 HLX | 64653 HLX | 240 V | 25000 W | 35.0 mm | 510 mm | 445 mm | 50 h |
| 93653 250 W 24 V | ELC3 250W GX5.3 | 240 V | 25000 W | 35.0 mm | 9999 mm | 448 mm | 300 h |
| 64659 250 W 24 V | 64659 | 240 V | 25000 W | 35.0 mm | 510 mm | 445 mm | 1000 h |
| 93506 250 W 120 V | 93506 | 120 V | 25000 W | 152.5 mm | 510 mm | 445 mm | 175 h |
| 93518 300 W 120 V | 93518 ELH 300W | 120 V | 30000 W | 152.5 mm | 510 mm | 450 mm | 35 h |

| Product description | Additional product data | | | Capabilities | |
|-------------------------|-------------------------|-----------------------------|------------------------------------|--------------|------------------|
| | Coating | Base (standard designation) | Minimum diameter of lamp enclosure | Cooling | Burning position |
| 64607 50 W 8 V | Aluminum | GZ6.35 | 51.0 mm | Forced | p90/p15 |
| 64615 HLX | Dichroic | GZ6.35 | 51.0 mm | Forced | p90/p15 |
| 64619 90 W 14.5 V | True | GX5.3 | 51.0 mm | Forced | Other |
| 64627 HLX | True | GZ6.35 | 51.0 mm | Forced | Other |
| 64629 100 W 12 V | Dichroic | GZ6.35 | 51.0 mm | Forced | p90/p15 |
| 64637 100 W 12 V | Dichroic | GZ6.35 | | | s120 |
| 64620 150 W 15 V | Dichroic | GZ6.35 | | | p90/p15 |
| 64634 HLX | Dichroic | GZ6.35 | 51.0 mm | Forced | p90/p15 |
| 64635 HLX ¹⁾ | Gold | GZ6.35 | 51.0 mm | Forced | Any |
| 93637 150 W 21 V | True | GX5.3 | 51.0 mm | Convection | s90 |
| 93638 150 W 21 V | Dichroic | GX5.3 | 51.0 mm | Forced | s90 |

Product family datasheet

| Product description | Additional product data | | | Capabilities | |
|---------------------|-------------------------|-----------------------------|------------------------------------|--------------|------------------|
| | Coating | Base (standard designation) | Minimum diameter of lamp enclosure | Cooling | Burning position |
| 64653 HLX | True | GX5.3 | 51.0 mm | Forced | Any |
| 93653 250 W 24 V | Dichroic | GX5.3 | 51.0 mm | Forced | Any |
| 64659 250 W 24 V | Dichroic | GX5.3 | | | Any |
| 93506 250 W 120 V | Dichroic | GY5.3 | | | s90 |
| 93518 300 W 120 V | Dichroic | GY5.3 | | | s90 |

| Product description | Country specific categorizations | | Environmental information Information according Art. 33 of EU Regulation (EC) 1907/2006 (RECh) | |
|-------------------------|----------------------------------|--------|--|--|
| | ANSI code | LIF | Date of Declaration | Primary Article Identifier |
| 64607 50 W 8 V | EFM | A1/229 | 29-02-2024 | 4050300006789 |
| 64615 HLX | EFN | A1/230 | 29-02-2024 | 4050300006796 4055462168832 |
| 64619 90 W 14.5 V | EPX | | 29-02-2024 | 4050300017273 |
| 64627 HLX | EFP | A1/231 | 29-02-2024 | 4050300006802 4008321074331 4055462168405 4052899447592 |
| 64629 100 W 12 V | EFP-6 | | 29-02-2024 | 4050300943169 4008321540164 |
| 64637 100 W 12 V | EBV | A1/271 | 29-02-2024 | 4008321352071 |
| 64620 150 W 15 V | EFR-5 | | 29-02-2024 | 4050300797397 4008321540140 |
| 64634 HLX | EFR | A1/232 | 29-02-2024 | 4050300006819 4055462168375 4052899447561 4055462169372 |
| 64635 HLX ¹⁾ | | | 29-02-2024 | 4050300238807 |
| 93637 150 W 21 V | EJV | | 29-02-2024 | 4050300350097 4008321106070 |
| 93638 150 W 21 V | EKE | | 29-02-2024 | 4050300456843 |
| 64653 HLX | ELC | A1/259 | 29-02-2024 | 4052899329348 |
| 93653 250 W 24 V | ELC-3 | | 29-02-2024 | 4050300636450 |
| 64659 250 W 24 V | ELC-10 | | 29-02-2024 | 4008321197795 4008321540188 |
| 93506 250 W 120 V | ENH | | 29-02-2024 | 4050300349930 |
| 93518 300 W 120 V | ELH | | 29-02-2024 | 4050300350059 |

| Product description | Candidate List Substance 1 | Declaration No. in SCIP database | Photometrical data | |
|---------------------|---------------------------------------|---------------------------------------|--------------------------|---------------------------|
| | | | Nominal luminous flux | Color temper- ature |
| 64607 50 W 8 V | No declarable substances contained | No declarable substances contained | | |
| 64615 HLX | No declarable substances contained | In work | | |

Product family datasheet

| Product description | Candidate List Substance 1 | Declaration No. in SCIP database | Photometrical data | |
|-------------------------|------------------------------------|------------------------------------|-----------------------|-------------------|
| | | | Nominal luminous flux | Color temperature |
| 64619 90 W 14.5 V | | In work | 43 lm | |
| 64627 HLX | No declarable substances contained | In work | | |
| 64629 100 W 12 V | No declarable substances contained | No declarable substances contained | | |
| 64637 100 W 12 V | No declarable substances contained | No declarable substances contained | | 3000 K |
| 64620 150 W 15 V | No declarable substances contained | No declarable substances contained | | 3270 K |
| 64634 HLX | No declarable substances contained | In work | | |
| 64635 HLX ¹⁾ | No declarable substances contained | No declarable substances contained | | |
| 93637 150 W 21 V | No declarable substances contained | No declarable substances contained | 270 lm | |
| 93638 150 W 21 V | No declarable substances contained | No declarable substances contained | 160 lm | 3300 K |
| 64653 HLX | No declarable substances contained | No declarable substances contained | 900 lm | 3400 K |
| 93653 250 W 24 V | No declarable substances contained | No declarable substances contained | 550 lm | 3250 K |
| 64659 250 W 24 V | No declarable substances contained | In work | 400 lm | 3200 K |
| 93506 250 W 120 V | No declarable substances contained | No declarable substances contained | 340 lm | 3150 K |
| 93518 300 W 120 V | No declarable substances contained | No declarable substances contained | 525 lm | |

¹⁾ Infra-red lamp; temperature at the focal point approximately 1300 °C

Product family datasheet

Application advice

For more detailed application information and graphics please see product datasheet.

References / Links

For further technical information please refer to the following OSRAM brochure:

“Technology and applications, Low-voltage tungsten-halogen lamps”

“Halogen lamps, low and medium voltage for entertainment, technical and medical applications” cross reference list

Disclaimer

Subject to change without notice. Errors and omission excepted. Always make sure to use the most recent release.