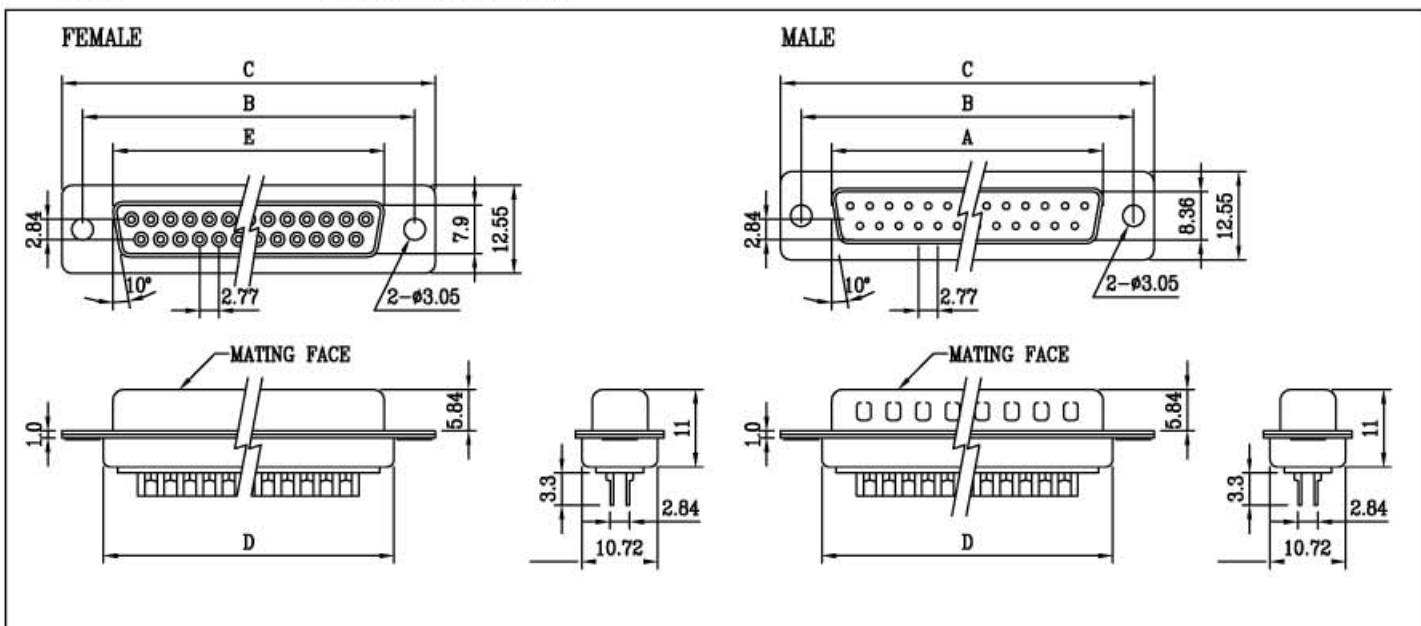


## D-Sub connector with solder cup

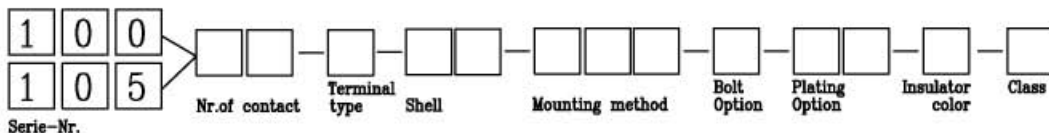
### Technical data :

#### Material and finish :

Shell steel tin coat over nickel  
 Insulator Thermoplastic polyester  
 Contact self-extinguishing rated 94V-0  
 Cooper alloy  
 Contact surface gold plated over nickel  
 Operating Temperature -55°C to +105°C  
 Electrical data :  
 Current rating : 5A  
 Contact resistance 30Mohm Max. at DC 100Ma  
 Insulator resistance 1000Mohm Min. at DC 500V  
 Voltage AC 1000V for 1minute



### How to order



Nr. of contact	Dimensions(mm)				
	A	B	C	D	E
09	16.92	24.99	30.81	19.28	16.33
15	25.25	33.82	39.14	27.51	24.66
25	38.96	47.04	53.04	41.30	38.38
37	55.42	63.50	69.32	57.71	54.84
50	52.86	61.11	66.90	55.30	52.34

Terminal type	Code	Shell	Code
Plug	1	Tin plated	50
Socket	2	Yellow chromate	60

Insulator color	Code
White	1
Black	2
Gray	3
Blue	4

Mounting method	Code
Standard through hole Ø 3.05mm	B00
Riveted with UNC 4-40 thread insert 4.0mm Top shell	B01
Riveted with UNC 4-40 thread insert 4.0mm Bottom shell	B02
Riveted with UNC 4-40 thread insert 5.8mm Top shell	B03
Riveted with UNC 4-40 thread insert 5.8mm Bottom shell	B04
Riveted with UNC 4-40 thread Board lock 6.0mm	B05
Riveted with UNC 4-40 thread Board lock 7.3mm	B06
Riveted with UNC 4-40 thread Insert 2.5mm on top shell	B10
Riveted with UNC 4-40 thread Insert 2.5mm on bottom shell	B11
Riveted with UNC 4-40 thread Insert 3.8mm on top shell	B12
Riveted with UNC 4-40 thread Insert 3.8mm on bottom shell	B13

Plating option	Code
Full gold flash plating	10
Selective gold flash plating	60
5u"Selective gold plating	05
15"Selective gold plating	15
30u"Selective gold plating	30
Selective gold plated for stamping contact only	

100	Solder cup with screw machine contact /Quality class 1,2 or 3
105	Solder cup with stamped contact /Only quality class 3

Hexagonal bolt option	Code
Loose HEX.Screws 4.8x11.8	10
Fixed HEX.Screws 4.8x11.8	20
Loose HEX.Screws 5.8x12.0	30
Fixed HEX.Screws 5.8x12.0	40
NON - Accessories	50

Please refer page — .  
 For mounting option .